



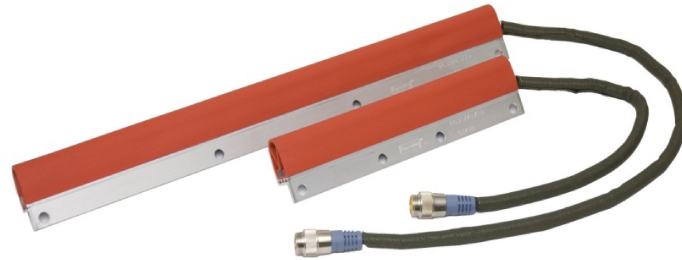
100 Schmitt blvd.
 Farmingdale, NY 11735
 Ph: 631-630-0442
 Fax: 631-630-0454
 www.tapeswitch.com

Technical Bulletin 110707-5

Proudly
 manufactured
 by Local 463
 safeguarding
 miners for over
 20 years

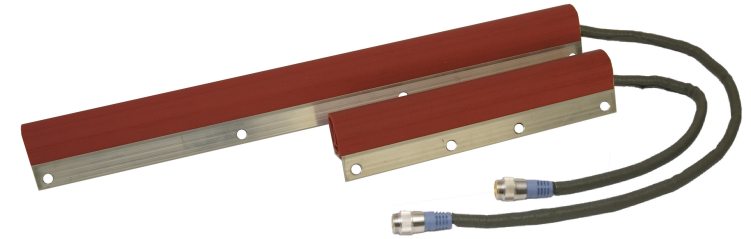


Original Color



| PART # | DESCRIPTION | QTY. |
|-------------|----------------------------------|------|
| 4631/46718 | 4-PIN 1' STOP SWITCH W/CONNECTOR | |
| 4632/46719 | 4-PIN 2' STOP SWITCH W/CONNECTOR | |
| 4633/149011 | 1' STOP SWITCH WITHOUT CONNECTOR | |
| 4634/149012 | 2' STOP SWITCH WITHOUT CONNECTOR | |

New Color



NEW FOR 2009

| PART # | DESCRIPTION | QTY. |
|-------------|----------------------------------|------|
| 4651/125331 | 4-PIN 1' STOP SWITCH W/CONNECTOR | |
| 4652/125332 | 4-PIN 2' STOP SWITCH W/CONNECTOR | |
| 4653/125333 | 1' STOP SWITCH WITHOUT CONNECTOR | |
| 4654/125334 | 2' STOP SWITCH WITHOUT CONNECTOR | |



| PART # | DESCRIPTION | QTY. |
|------------|--------------------------|------|
| 0301/33020 | 4-PIN BLUE TEE CONNECTOR | |



| PART # | DESCRIPTION | QTY. |
|------------|--|------|
| 0300/33031 | 4-PIN MALE FEMALE CORDSET (3 METER) | |
| 0302/33024 | 4-PIN FEMALE SINGLE END CORDSET (5 METERS) | |